



MODPACK SYSTEM

Packing Services

Our packing is the key to your successful export!

As a packaging company we have been present on the Romanian market since 2007. We have achieved a top position and now are starting to develop our business in other countries.

We are accredited with ISO 9001-2001 and we are certified for wood treatment according NIMP 15. All our projects are designed according with International standards for packaging: SEI4 - ITN54750 - HPE GERMANY- SK EGC - CPS CSTOI GE ENERGY - SIEMENS Standard.

Our main clients:
TIMKEN, GENERAL ELECTRIC,
FORD, ALSTOM, SIEMENS, ABB,
AREVA, QE, AERNNOVA, BAT, JTI.

We are now expanding into new markets in other European countries. As a modern company we are continuously growing. We want to find new customers and profitable international partnerships.



OUR LOGISTICS AND FACILITIES

Modpack System Romania

HEADQUARTERS IN PLOIESTI

FACTORY IN CLUJ-NAPOCA



2.30 HRS FROM CONSTANTA HARBOUR ON THE HIGHWAY

30 MIN FROM BUCHAREST ON THE HIGHWAY

5000

SQUARE METERS OF
WAREHOUSING
SPACE

3000

SQUARE METERS OF
PRODUCTION AREA

500

SQUARE METERS OF
OFFICE SPACE



**Fully equipped production
area**

**Fully equipped warehouse
area**

Modpack System Poland



**2014
TURNOVER
3.00
MIL.
EURO**

**100
EMPLOYEES**

80 WORKERS
20 TECHNICAL
EMPLOYEES

**LOGISTICAL
FACILITIES**

- 3 FORKLIFTS
- 5 TRUCKS

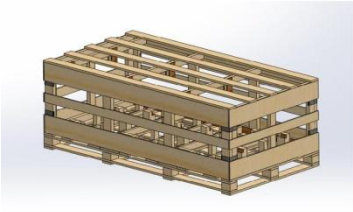
Modpack Czech s.r.o.



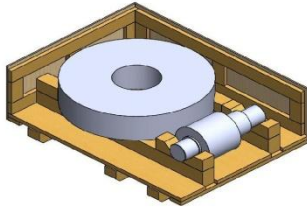
Innovations

- Modpack System provides customized packaging solutions for each partner, with minimal costs and maximum efficiency.
- The products and services offered by us are suitable for all types of transport (road, sea and air) and are applicable in various fields: automotive , oil & gas, metal, machine building, electric power, automation, chemistry, food industry, etc.
- Every packaging solution consists in a kit for mechanical protection against shocks and corrosion protection (VCI bags/foil anticorrosion inhibitors and desiccants). The boxes are designed to be lightweight, easy to handle and when required reusable.
- Given the staff experience, high qualifications and the results of previous projects , we are able to respond to any packaging request.

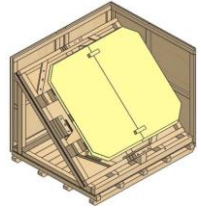
Reusable Crate for Motors



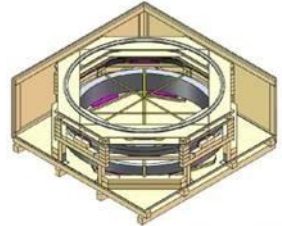
Crate for Pinion & Gear



Inclined Crate for Bearings



Horizontal Crate for Bearings



Continuous Improvement

➤ Our goal is to reach a top position among the European companies specializing in manufacturing wooden packaging and packing services, for export and industrial relocations.

➤ The Company growth/ development plan will include new ventures in Europe and USA by 2017.

➤ Starting 2015 we have continued an aggressive investment plan in Production/ Storage areas and Experts as follows:

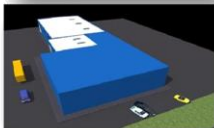
- In February 2015 we invested over 1.2 mil euro in Ploiesti & Cluj production areas.
- Employed over 80 qualified workers and 20 high skilled technical employees.
- Increased Auto and Logistic park at 20 auto vehicles/vans, 5 trucks, 3 forklifts, ...
- Rented a new warehouse in Ploiesti and assured 10000 square meters of storage
- Developed six new sales offices in Romania in addition to the three existing ones.

➤ Our innovative and cost effective packaging solutions promote us to become 1st supplier for top companies like: TIMKEN , GE, FORD, EMERSON, PHILIP MORRIS, SIEMENS ,...

➤ Forecasted a turnover of 5.5mil euro for 2015.



2015 A New Beginning !



OUR SERVICES



www.modpack.ro





TIMKEN

ABB



GE
Energy

SIEMENS

A

AREVA

ALSTOM



COMPLETE SOLUTIONS FOR PACKING

WE PROVIDE PROFESSIONAL SERVICES ON SITE FOR EXPORT PACKING AND INDUSTRIAL RELOCATION

OUR PRODUCTS AND SERVICES HAVE APPLICATIONS IN ALL INDUSTRY AND ARE SUITABLE FOR ALL TYPES OF TRANSPORT: SEA, ROAD, AIR



www.modpack.ro

